



## 28 Candish Drive

Elburton, Plymouth, PL9 8DB

**£1,750 Per Calendar Month**



Available from August 2025 is this fabulous detached bungalow located in this very exclusive and popular part of Elburton. It is available on an unfurnished basis & has accommodation briefly comprising a modern fitted kitchen with appliances, lovely-sized lounge/dining room leading out onto the private rear garden, 3 bedrooms, the master having fitted furniture & a modernised ensuite shower room, & a modern bathroom. The property is being let with a gardening contract & on a long-term basis. Adjacent to the property is the detached double garage & drive.





CANDISH DRIVE, ELBURTON, PL9 8DB

ACCOMMODATION

Access is via the covered entrance through the part glazed entrance door leading into the entrance hall.

ENTRANCE HALL

Loft hatch. Built-in linen cupboard housing the pressurised hot water cylinder. Further cloak cupboard. Wood flooring extending into the lounge/dining room.

BEDROOM ONE 12'0" x 10'7" max dimensions (3.68 x 3.23 max dimensions)

Double-glazed square bay window to the front elevation. 2 fitted wardrobes with folding doors. Range of fitted bedroom furniture including dressing table with drawer space and open-end displays. Up-&-over storage units with open displays and bedside units. Doorway opening into the ensuite shower room.

ENSUITE SHOWER ROOM 7'7" x 4'6" at widest points (2.32 x 1.39 at widest points)

Modern suite including shower cubicle with shower screen, shower unit and spray attachment, sink unit with vanity cupboard beneath and low level toilet. Vertical towel rail/radiator. Tiled walls. Obscured double-glazed window to the side elevation.

BEDROOM TWO 10'5" x 9'8" (3.19 x 2.97)

Double-glazed window to the side elevation. Fitted wardrobe.

BEDROOM THREE 8'7" x 12'5" (2.62 x 3.80)

Double-glazed window to the side elevation. Fitted wardrobe. Fitted bedroom furniture including a desk, further wardrobe and storage unit and open-end displays.

BATHROOM 7'7" x 5'6" (2.32 x 1.69)

Lovely modern suite, matching the ensuite shower room and comprising a panel bath with twin hand-grips, mixer tap and shower unit with spray attachment, low level toilet and sink unit with vanity cupboard beneath and a mirrored cabinet above. Vertical towel rail/radiator. Fully-tiled walls. Obscured double-glazed window to the side elevation.

KITCHEN 10'10" x 10'9" incl kitchen units (3.31 x 3.29 incl kitchen units)

Series of modern matching eye-level and base units with a range of work surfaces and matching splash-backs. Inset single drainer sink unit with mixer tap. Built-in 4-ring electric induction hob. Adjacent built-in electric oven and microwave. Please note that the plate warmer located beneath is not operational. Integrated fridge and freezer. Built-in breakfast bar. Cupboard concealing the gas boiler. Double-glazed window to the side elevation. Part glazed door providing access to the side passageway.

LOUNGE/DINING ROOM 20'10" x 15'6" at widest points (6.36 x 4.74 at widest points)

Continuation of the wood flooring. Double-glazed window and double-glazed sliding patio doors providing a pleasant outlook and access onto the rear garden.

OUTSIDE

Located on a lovely corner plot. There is a gardening contract within the tenancy agreement. At the front of the property there is an open-plan lawned area of garden bordered by natural stone wall which is home to a number of mature range of trees and shrubs. A path and covered porch leads to the front entrance. There is a further open-plan lawned and planted area of garden to the side of the property and a driveway leading to the detached double garage. A side gate opens into the rear garden. The rear garden is lovely and private and has a paved patio area adjacent to the rear of the property leading to a lawned section which has various planted borders. A path leads up to an area behind the garage where there is a timber shed.

DETACHED GARAGE

Electric roller door leading to an open space which has power and light.

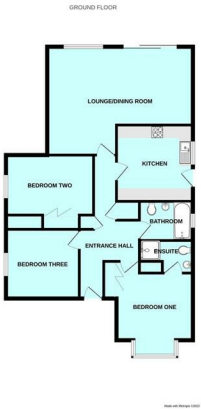
COUNCIL TAX

Plymouth City Council  
Council tax band C

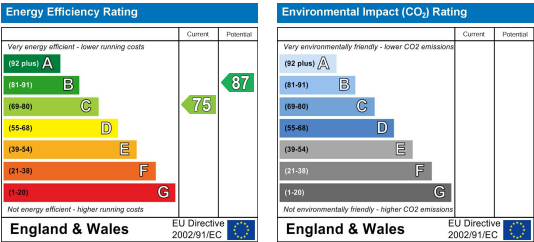
Area Map



Floor Plans



Energy Efficiency Graph



These particulars, whilst believed to be accurate are set out as a general outline only for guidance and do not constitute any part of an offer or contract. Intending purchasers should not rely on them as statements of representation of fact, but must satisfy themselves by inspection or otherwise as to their accuracy. No person in this firms employment has the authority to make or give any representation or warranty in respect of the property.